

# STOREDEFENDER™ DOOR

Models PSD10 & PSD20 (Insulated)



## BETTER PROTECTION FOR RETAILERS IN UNCERTAIN TIMES

### BUILT TO PROTECT

The StoreDefender Door consists of heavy-duty 18 gauge slats that protect against common tool and body force attacks and stay securely in the guides with continuous cast windlocks. To prevent lifting attempts, the slats lock into the barrel and robust slide locks secure the rigid 6 inch Heavy Duty Bottom Bar in place.

### PROVEN PERFORMANCE

The StoreDefender Door was put through intensive testing. To ensure it could withstand heavy impacts and pressures from surges of crowds, the door was “push” tested to 2,500 lbs of force while still securely held in the guides. To ensure it could withstand multiple attackers attempting to lift it, the door was tested and found that it required 4,500 lbs of effort to lift just 3 inches.

### UPGRADE TO AUTOMATED PROTECTION

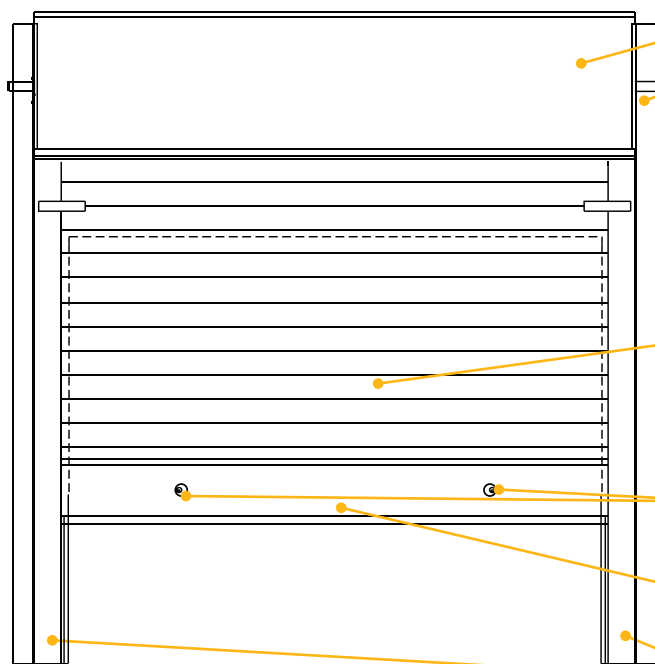
The StoreDefender Door can be upgraded to include our fail-safe AlarmGard Operating Systems. It allows the door to be connected to the building’s security system and can be programmed to close in the event of an alarm or power loss – keeping employees and merchandise safe from theft or attack. If desired, an optional on-board battery back up can prevent nuisance drops due to power outages.

### ENDLESS VERSATILITY

The StoreDefender is extremely versatile, making it the perfect fit for any storefront or back of house application. It is not only available as a service door, but also as a Thermiser Max insulated door when environmental separation is required. It is available in all of our standard finishes in addition to more than 180 powder coat colors and can also feature one of our custom graphics to promote store branding.

## DEFENDER SERIES **STOREDEFENDER™ DOOR** Models PSD10 & PSD20 (Insulated)

### STANDARD COMPONENT MATERIALS AND FINISHES



**HOOD** - Galvanized steel color to match curtain.

**BRACKETS** - Steel with powder coated finish to match curtain. Bolted to guide assembly and support counter-balance shaft and curtain.

**MOTOR** - MG motor is standard. Can be upgraded to the AlarmGard or AlarmGard Plus to allow automated operation and a hand chain and battery backup in the case of a power outage.

**CURTAIN** - 18 gauge galvanized steel with GalvaNex™ polyester enamel finish in Gray, Tan, White or Brown. Interlocking roll-formed slats with continuous endlocks riveted to the ends of the slats.

**LOCKING** - Two hybrid cylinder locks with manually thrown slide bolts via a thumb turn located on each side of the bottom bar.

**BOTTOM BAR** - Robust 6" tall aluminum bottom bar in mill or powder coated finish.

**GUIDES** - Structural steel with powder coating to match curtain. Angle assemblies bolt to the wall and support the weight of the door.

### OPERATION AND STRUCTURAL REQUIREMENTS

#### Manual chain or Motor operation available.

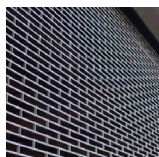
MG Motor Operator is standard. AlarmGard or AlarmGard Plus Operator is optional – it offers a hand chain and battery back up in the event of a power outage and can be connected to the building alarm for automated operation.

This product is supported by a guide assembly attached to the jamb construction. No additional header support is required unless hood supports are mandated by a larger opening width.

### CERTIFICATIONS & LISTINGS

- Tested\* to more than 4500 lbs. of effort to lift 3"
- Tested\* to more than 2500 lbs. for deflection (did not test to failure, bottom bar deflection of 3")

\*The door used for testing was 14'1" x 10'



### CUSTOM-DESIGNED SOLUTIONS

Contact our experienced Architectural Design Support Team for help in customizing our products to fit your specific application.

☎ 877.537.4567 ✉ [arch@cornellcookson.com](mailto:arch@cornellcookson.com)